

LabTech, Inc.
Address: 114 South Street, Hopkinton, MA 01748, U.S.A.
Tel: +1 508 435 5500 Fax: +1 508 435 5595

CDS Analytical
Address: 465 Limestone Road, Oxford, PA 19363, U.S.A.
Tel: +1 800 541 6593 International: +1 610 932 3636

Beijing LabTech Instruments Co., Ltd.
Address: No.6 Anqing Street, Area B, Tianzhu Airport Industrial Park, Shunyi District, Beijing, 101300 P. R. China
Tel: +86 10 80486450 Fax: +86 10 80486354

LabTech Hong Kong Ltd.
Address: Unit D, 22/F, YHC Tower, 1 Sheung Yuet Road, Kowloon Bay, Hong Kong, China
Tel: +852 2759 8199 Fax: +852 2331 8536

LabTech S.R.L
Address: Via fatebenefratelli, 1/5-24010, Sorisole (BG), Italy
Tel: +39 035 576614 Fax: +39 035 4729414



www.labtechworld.com
Email: info@labtechworld.com

AutoEmpore Automatic Solid Phase Extraction

Your Lab Our Tech

LabTech Group

AutoEmpore Automatic Solid Phase Extraction

AutoEmpore is designed for the purification and enrichment of organic pollutants in large-volume water samples, including clean water, surface water, municipal wastewater, and industrial effluents. With a maximum sample loading flow rate of 120 ml/min, this instrument significantly enhances sample loading efficiency compared to traditional column-based solid-phase extraction methods. It features a patented innovative sample loading design, automatic online filtration, and water removal capabilities, replacing numerous complex manual operations. This streamlines the process, greatly reduces sample processing time, and increases test efficiency. The instrument is widely applicable across various industries, including environment, disease control, and public security.

No filtration required; sample directly from water.

One liter of water can be processed in just 30 minutes!

Ultra-high efficiency- process up to 48 samples in one day.

The system can process three water samples simultaneously, with the capability to complete the treatment of 1 liter of water in as fast as 30 minutes. In an 8-hour period, it can successfully conduct solid-phase extraction experiments on up to 48 samples.

Short pathway design for analyzing emerging contaminants

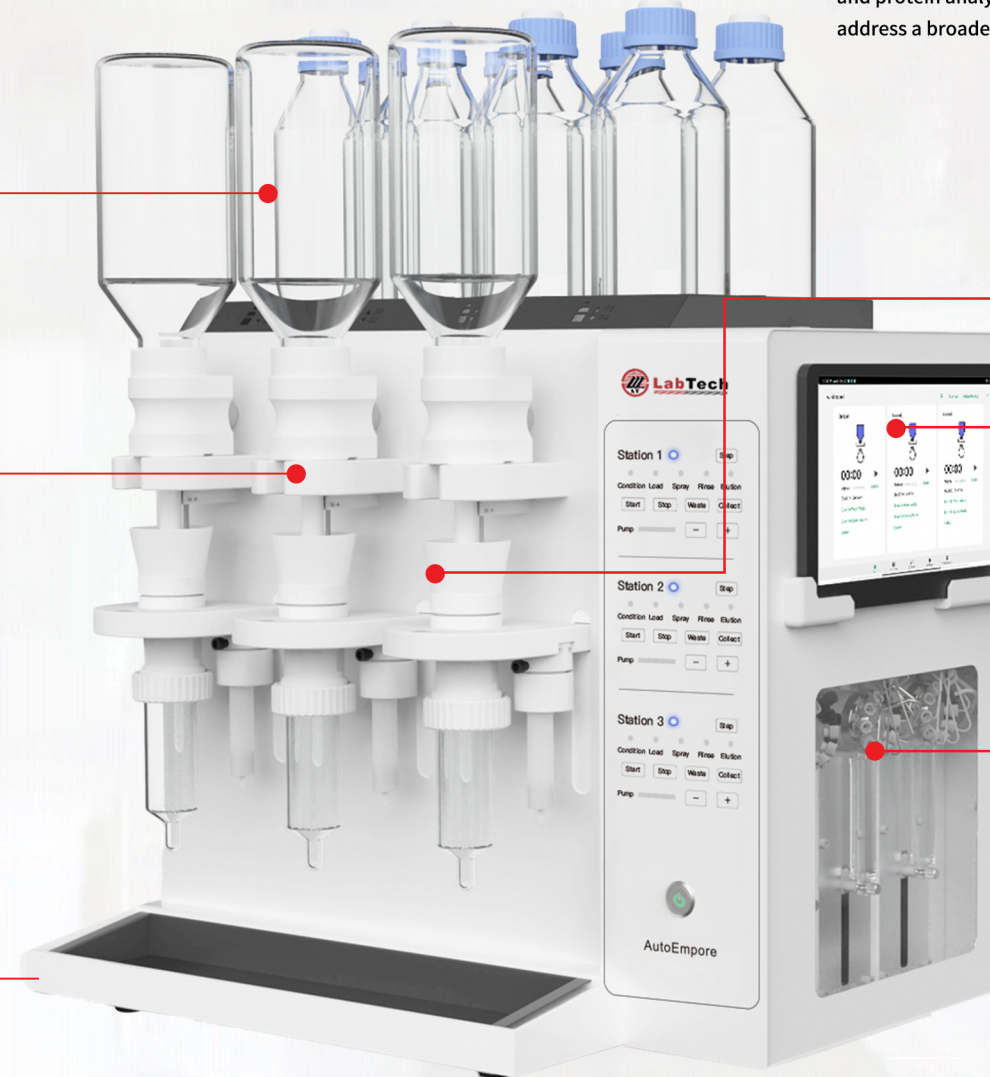
The instrument features an extremely short pathway design, eliminating dead volume and residue, making it particularly suitable for the detection of emerging contaminants such as perfluorinated compounds and antibiotics. It allows for quick and flexible transitions between routine analyses and the detection of new pollutants. Additionally, it supports an automatic rinsing function to ensure the recovery rate of long-chain perfluorinated compounds.

Direct Water Sampling with Online Removal, No Filtration Needed

The instrument can directly process clean water, surface water, and wastewater without manual filtration. It automatically handles all steps, including sampling, filtration, water removal, elution, and collection.



Complex water sample loading



Empore- LabTech's proprietary consumables brand.

In 2018, Labtech acquired the 3M Empore brand, establishing it as its own line of consumables. Designed for compliance with U.S. EPA standards, Empore disk exhibit exceptional performance and come in a variety of types, covering multiple application areas including environment, biology, and protein analysis. LabTech is committed to the ongoing development of new disk types to address a broader range of application needs, ensuring user satisfaction and adaptability.



Broad Compatibility and Strong Expandability

Compatible with 25mm and 47mm solid-phase extraction disk and columns, and various collection bottle sizes. The instrument can be expanded to 6 or 9 channels.

User-Friendly Touch Control

The instrument can be remotely controlled wirelessly via mobile devices, and its operation is not affected by wireless connectivity. It can also be operated directly from the instrument panel, ensuring a user-friendly and convenient experience.

Precise Control with flexibility and freedom

The dual-pump system features independent sample and solvent pumps, ensuring rapid sample introduction for large volumes. Each channel can be controlled by individual high-precision injection pumps to regulate activation and elution flow rates, ensuring accuracy for small volumes. All three channels can operate simultaneously using the same method or different methods.

APPLICABLE METHODS

EPA Method 533 :

Determination of per-and polyfluoroalkyl substances in drinking water by isotope dilution anion exchange solid phase extraction and liquid chromatography/tandem mass spectrometry

EPA Method 1633

Analysis of Per- and Polyfluoroalkyl Substances (PFAS) in Aqueous, Solid, Biosolids, and Tissue-Samples by LC-MS/MS

EPA Method 537.1

Determination of selected per-and polyfluorinated alkyl substances in drinking water by solid phase extraction and liquid chromatography/tandem mass spectrometry (LC/MS/MMS)

HJ1150-2014 Water quality Determination of polychlorinated biphenyls GC-MS

HJ1150-2020 Water quality Determination of nitrophenol compounds GC-MS

HJ1150-2014 Water quality Determination of nitrobenzene compounds GC-MS

HJ478-2009 Water quality Determination of polycyclic aromatic hydrocarbons -- liquid-liquid extraction and solid-phase extraction -- HPLC

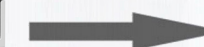
HJ478-2009 Water quality Determination of polycyclic aromatic hydrocarbons -- liquid-liquid extraction and solid-phase extraction -- HPLC

GBT5750.8-2023 Standard test method for drinking water -- Part 8: Organic indicators

TOTAL SOLUTION



AutoEmpore-3
Automatic Solid Phase Extraction



M12
Automatic Parallel Concentrator